

Compac COM125 Flow Meter

Data Sheet

The Compac COM125 Flow Meter is highly accurate and reliable with simple flange mounting holes for easy installation.

Features of the Compac COM125 Flow Meter

1. NMI Weights and Measures approval
2. Low maintenance costs
3. Meter can be overhauled in situ without the need to remove pipework ie Serviceman can easily replace the Rotor or Electronics with only an Allen key in just a few minutes
4. Long life PEEK bushes – no ball bearings to wear out
5. No shaft end seals to leak
6. Corrosion resistant aluminium housing
7. Secure Electronic module – no external shafts or castellated disks that can be tampered with

The COM125 Meter is suitable for these liquid fuels

- Diesel
- Petrol
- AVGAS
- JET A1





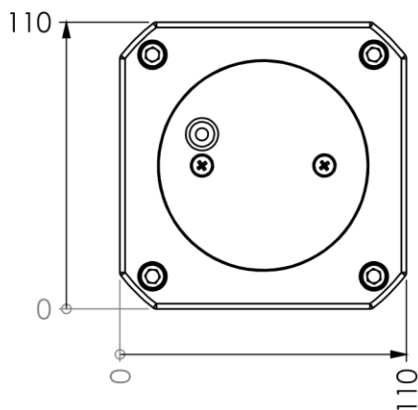
COM125 Specifications:

Power requirements	
Maximum Supply Voltage	6.0 V
Minimum supply voltage	5.0V
Maximum Supply current	235mA
Output	
3 Channel	5V Square Wave
Flow Rate and Pressure	
Minimum Flow Rate	16 litres per minute
Maximum Flow Rate	160 litres per minute
Maximum Working Pressure	5 bar
Temperature Range	
Ambient Temperature range	-40°C to 70°C
Material	
Body and End plates	AL6061 Aluminium or equivalent
Internal Seals	NBR Shore 70 Oring seals
Rotor	Aluminium
Bushes	PEEK
Inlet / Outlet connection	
Two bolt flange with Oring	
Provision for Sealing	
Predrilled holes through body and screws for wire with lead seal	
Recommended filter size before Meter	
25 micron	
Electrical Approvals	
IECEX	IECEX ExTC 17.0009X Ex ib IIA T4 Gb
ATEX	CE 0598 TÜV 18 ATEX 8225X
Weights and Measures approval	
NMI Certificate of Approval NMI 5/6A/236	The COM125 Meter has NMI Australia Weights and Measures approval when connected to either a Compac or any other compatible Calculator/Indicator with NMI approval. Accuracy class: 0.5 (system calibrated to +/- 0.3%)

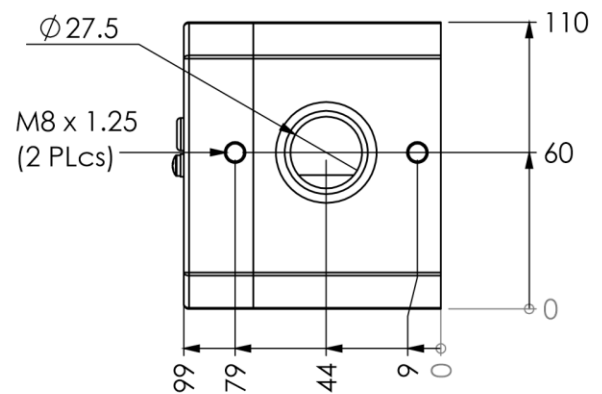


COM125 Dimensions including pipework mounting holes

FRONT VIEW



RIGHT VIEW (Outlet)



BOTTOM VIEW (Inlet)

