

Compac Rack Dispensers



The MASTER range of RACK modular Dispensers offers the advantages of a Multi-hose Dispenser specially designed to seamlessly integrate directly into your Tank design in a package that comes from Compac assembled, tested, and ready to go eliminating the need to make up pipework or mount Meters etc.

Available in 3 hose, 4 hose, 5 hose and 6 hose versions for:

- Diesel
- Adblue

If your project has special requirements, talk to Compac about engineering a solution to suit.

Remote Displays can be mounted up to 5 metres from the RACK Dispenser, Nozzle holders and Hi/Lo switches are supplied separately panel mounted for easy installation on the Tank

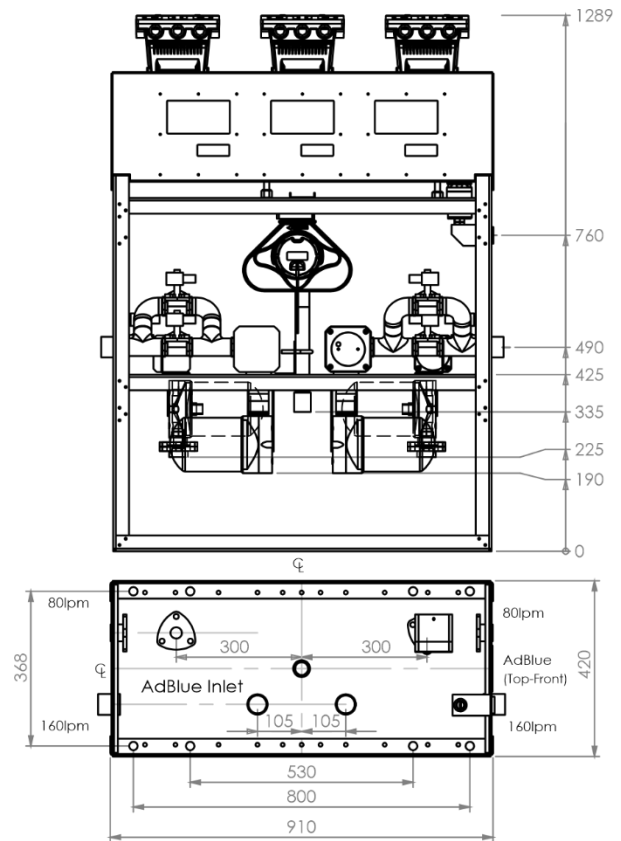


Key Features

- Modular design that can be customised to suit any installation.
- 3 Hose, 4 Hose, 5 hose and 6 hose options
- 80/160/400 lpm Diesel Flow-rate options
- Petrol and AdBlue options
- Integrates seamlessly into the Tank design
- Retail or Commercial backlit LCD Displays
- Remote mounted Displays and Nozzle holders- up to 5 metres from the RACK Dispenser
- All hoses can be operated simultaneously
- Supplied without exterior panels
- Compac Forecourt Pump Protocol

Weights and Measures Approvals

A copy of this approval is available from Compac



| MODEL number | No. of Hoses | Products | Petrol flowrate | Diesel flowrate | AdBlue flowrate |
|-------------------------|--------------|----------------|-----------------|-----------------|-----------------|
| MMA30-80S x1 MR80S x1 | 3 | Diesel, AdBlue | --- | 80 lpm | 30 lpm |
| MMA30-160Sx1 MR160S x1 | 3 | Diesel, AdBlue | --- | 160 lpm | 30 lpm |
| MMR80-40S x2 | 4 | Diesel, Petrol | 40 lpm | 80 lpm | --- |
| MMA30-80S x2 | 4 | Diesel, AdBlue | --- | 80 lpm | 30 lpm |
| MMA30-160S x2 | 4 | Diesel, AdBlue | --- | 160 lpm | 30 lpm |
| MMR160-40S x2 | 4 | Diesel, Petrol | 40 lpm | 160 lpm | --- |
| MMA30-160Sx2 MR400S x1 | 5 | Diesel, AdBlue | --- | 160 / 400 lpm | 30 lpm |
| MMR160-80S x2 MMA30S x1 | 5 | Diesel, AdBlue | --- | 80 / 160 lpm | 30 lpm |
| MMR160-80S x2 MA30S x1 | 5 | Diesel, AdBlue | --- | 80 / 160 lpm | 30 lpm |
| MMR80-40S x2 MMR40S x1 | 6 | Diesel, Petrol | 40 lpm | 80 lpm | --- |
| MMR160S x2 MMA30S x1 | 6 | Diesel, AdBlue | --- | 160 lpm | 30 lpm |



Compac Industries Ltd,
52 Walls Road, Penrose,
Auckland 1061.
New Zealand.

PO Box 12 417, Penrose,
Auckland 1642.
New Zealand.

Tel: +64 9 5792094

www.compac.co.nz

Compac Sales Pty Ltd,
32 Boundary St,
South Melbourne VIC 3205.
Australia.

PO Box 312 Port Melbourne,
VIC 3207.
Australia.

Tel: +61 3 8696 4802

Fax: +61 3 9682 1985

www.comsales.com.au

Compac Industries India Ltd,
K73 Udyog Nagar,
Main Rohtak Road.
Delhi - 110041.
India.

Mobile: +91 85888 78287

www.compacindia.com