

CNG Dispenser Features

Introduction

Compac CNG dispensers are designed and manufactured to the highest international standards. These units are the result of over thirty years of manufacturing CNG dispensers combined with constant investment in research and development.

Compac meter is manufactured to be compliant with the latest OIML standards on natural gas confirmed by an internationally approved testing laboratory. Dispensers are manufactured to the latest ATEX standards and there is the option of purchasing dispensers with PED approval and SGS witnessed test certificate.

All materials used in the dispensers are of the highest quality and the dispensers are made of stainless steel for the best corrosion resistance and to maintain ductility at low temperatures.

The complete dispenser is gas tested at on our functional test facilities before being dispatched.

Standard Dispenser Features

- Stainless steel construction. Includes all valves, fittings, tubing, sheet metal, framing and brackets. Base rails are hot dip galvanized steel. (Legend model Doors galvanized steel)
- Stainless steel panels powder-coated white
- Fixed pressure refueling shutoff at 200 bar
- Large backlit LCD displays
- Push to start button
- Stop button to close solenoids and terminate fill
- Outlet pressure gauges Ø100 dual scale 0-400 bar
- Manual outlet isolation valve
- Internal pipework ½" 316L stainless steel tube

Dispenser Performance

- Standard Flow rate up to 1-20 kg/min, or high flow up to 1-50 kg/min, and ultra high flow up to 1-80kg/min
- Accuracy compliant to:
 - US W&M NTEP – Accuracy Class Type 2.0
 - OIML R139 (confirmed by NMI Holland)
 - Australian NMI R139
 - Russian Weights and Measures Approval (VNIIMS)
- Maximum inlet pressure 275 bar, option for up to 350 bar or 300 bar for PED approved
- Power 230V, 50 Hz ±10%
- Ambient Temperature Range: -25°C to +55°C (-40°C option also available)
- Gas Temperature Range: -55°C to +80°C (intermittent)
- Gas Temperature Range: -40°C to +80°C (continuous)

Compac Electronic Components

- Compac C4000 Power Supply and Electronic Head
- Dispenser wired for Class 1 Zone 1 Hazardous Areas
- Intrinsically safe meter, displays, totes and switches
- OIML approved error checking on meters and displays
- Three line LCD displays with backlighting
 - Seven digit (32mm) for price and quantity
 - Five digit (25mm) digits for unit price
- Non resettable ten digit electronic totals for price and quantity
- Simple interface to setup meter and parameters
- Adjustable high and low flow cutoff
- Units of measure can be kg, m³ or litre equivalent

CNG Dispenser Features

Compac Hydraulic Components

- Coriolis Mass Flow Meter 1-80kg/min (Model KG80)
- High Flow Solenoid (Model SCI12-SS)
- High Flow Regulator (Model RCI12-SS)
- Filter with integral check valves and coalescing element on every incoming gas line (Model FCI12-SS)
- All valves and fittings are stainless steel with batch traceability. All valves rated to at least 275 bar and can be serviced in place without removing pipework. Option to be rated to 350 bar and -40°C

Hose Assembly Options

Standard Flow 1-15(20) kg/min

- Standard is 3/8" hose with OPW ILB-1 in-line breakaway, Compac Three-Way Valve and NGV1 refueling coupling with gas vent at breakaway location
- Option of Snaptite breakaway
- Option of NZ 7/16" probe with 250mm probe hose
- Option of OPW CT1000 refueling coupling
- Option of gas vent at dispenser base for gas reclamation or remote venting

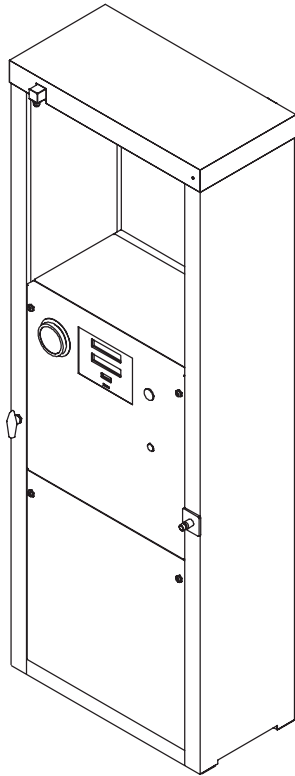
High Flow 1-50 kg/min

- Standard is 1/2" hose with OPW ILB-1 in-line breakaway and CT1000 refueling nozzle with gas vent at breakaway
- Option of CT5000 refueling nozzle
- Option of OPW ILB-5 breakaway

Dispenser Options

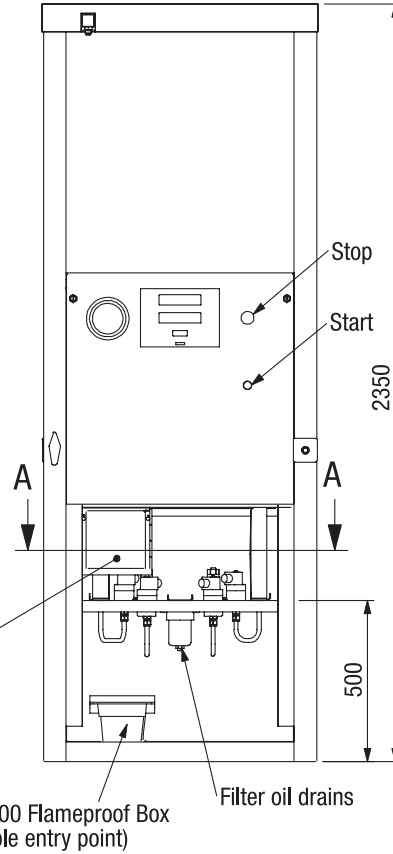
- One, two or three gas inlet lines
- Single or Dual Hose
- High pressure model for 350 bar inlet
- Higher flow options
- Temperature compensated refueling shutoff
- Electro-mechanical totaliser 7 digits
- Units of measure on displays to suit country
- Gauges with psi and either bar, MPa or kg/cm²
- Decals to suit customer branding requirements
- Standard with NZ Compac communications protocol
- Option of Gilbarco US protocol and/or RS485 Modbus monitoring mode
- Preset for preset fills
- Other options available on request

CNG Dispenser Features - Legend

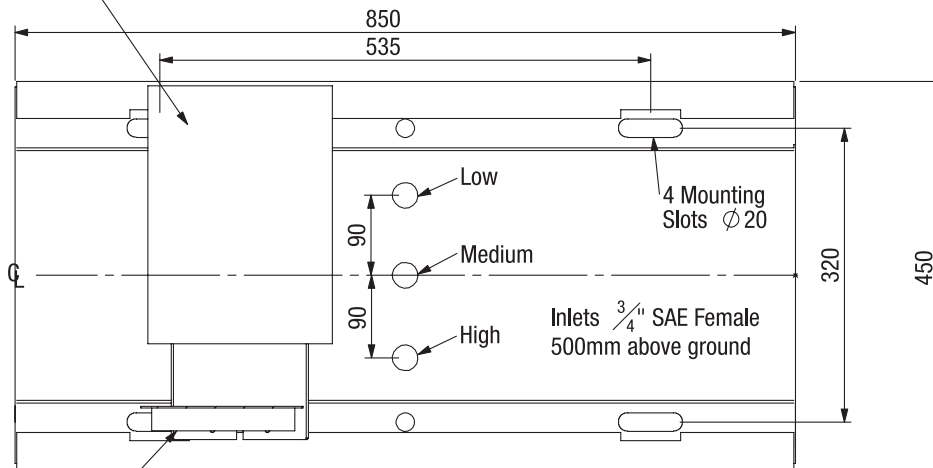


Legend Crating Dimensions

Approx: 700x1200x2600, 2.2m³
Weight: 250-300kg



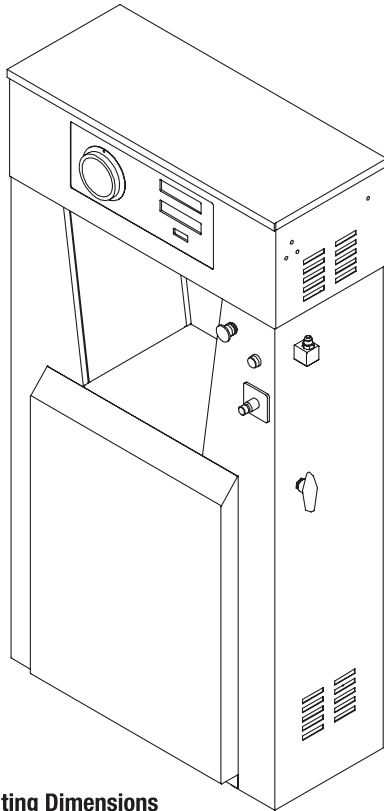
C4000 Flameproof Box (Cable entry point)



C4000 Processor

A-A Footprint

CNG Dispenser Features - Laser



Laser Crating Dimensions
 Approx: 700x1100x1800, 1.4m³
 Weight: 200-300kg

